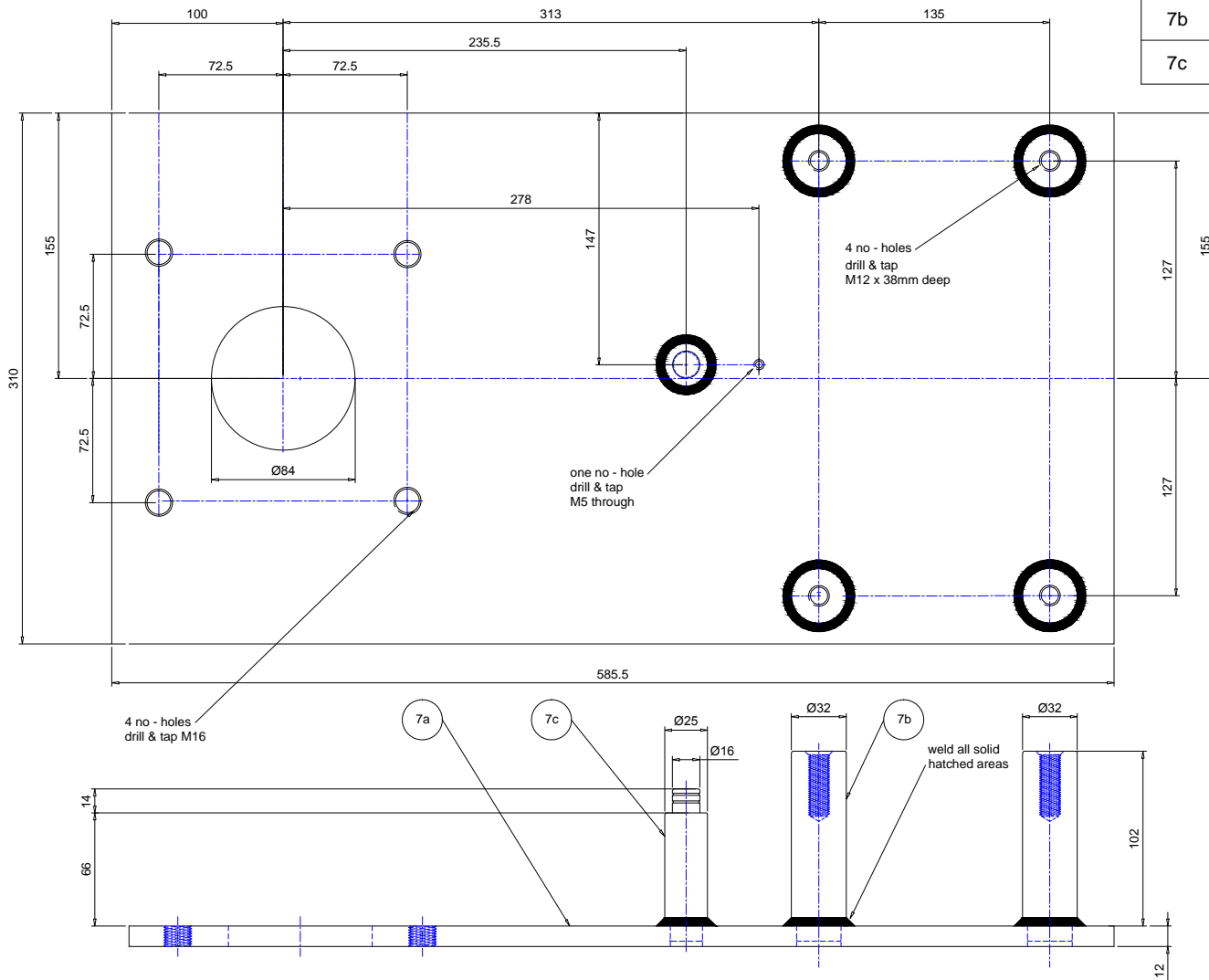


BILL OF MATERIAL

Item	Qty	Description
7a	1	310 x 585 x 12 thick mild steel plate.
7b	4	Ø32 x 112 lg mild steel bar
7c	1	Ø25 x 90 lg mild steel bar



This drawing is the property of ELLARD LTD, it may not be reproduced without the written authorization of Ellard Limited. All intellectual property rights are expressly reserved



Roundthorne Industrial Estate
 Ellard House, Floats Road
 Wythenshawe, Manchester
 M23 9WB
 Tel: 0161 945 4561, e-mail: technical@ellard.co.uk

Title

GENERAL ARRANGEMENT
 FOR BP9 (JM1500)
 (STOCK CODE 03298)

Rev/Notes

Date 10/03/2022

Drawn by DE Chk'd by AP

Drg # BP9 - General Arr (3)