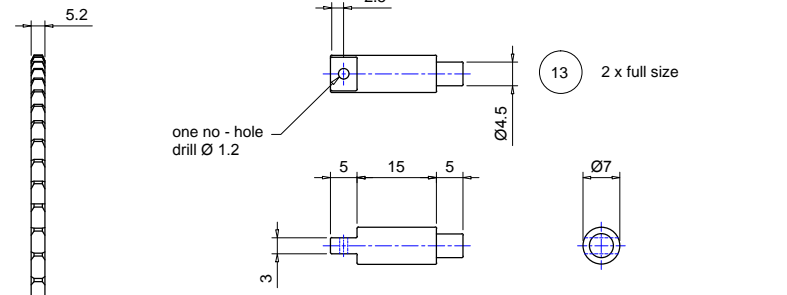
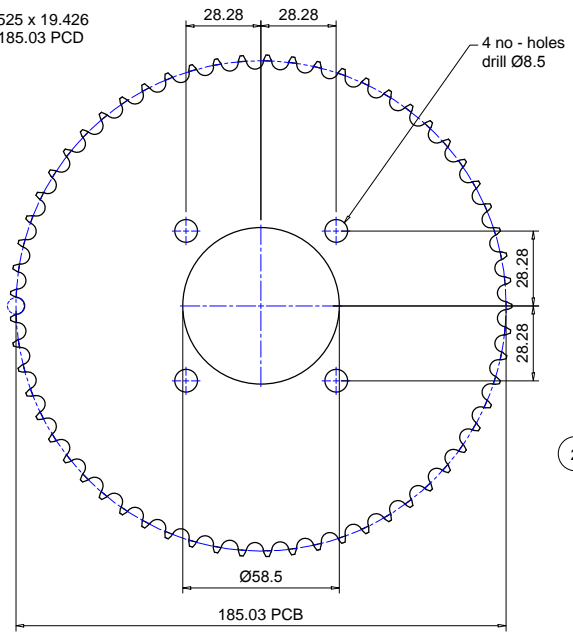
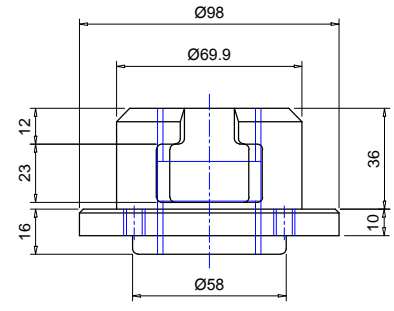
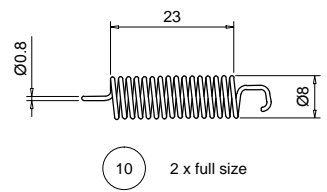
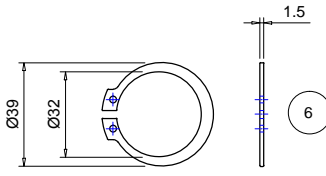
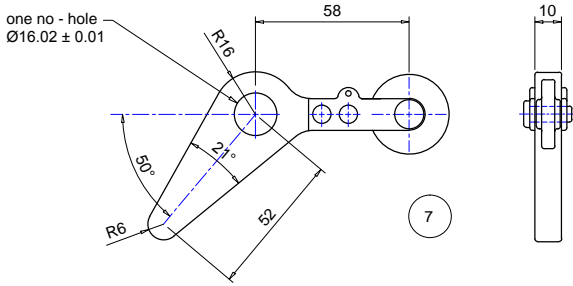
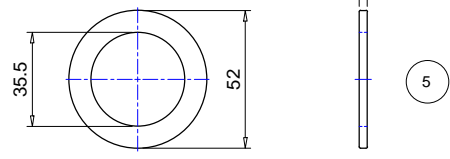
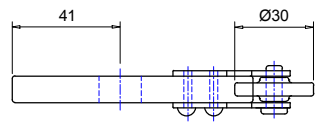
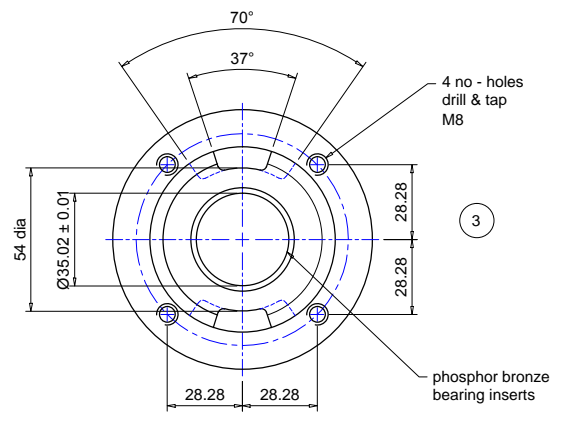
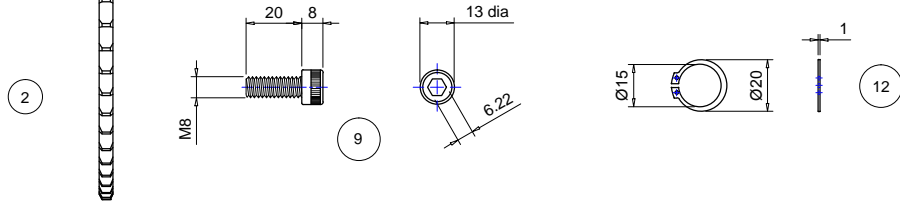


PCB Calculation  
 $9.525 \times 19.426$   
 $= 185.03$  PCD



BILL of MATERIAL			
Item	Qty	Description	Stock code
2	1	61T x 3/8" pitch to suit 06B-1 roller chain	
3	1	Ø98 x 52 long cast iron boss	
5	1	Ø35 x 3 thick mild steel washer	
6	1	Ø32 spring steel circlip	
7	1	chain break assembly	
9	4	M8 x 20 long steel caphead screw	
10	1	Ø8 x 0.8 gauge x 23 long steel spring	
12	1	Ø15 spring steel circlip	
13	1	Ø7 x 25 long EN24 steel rod	



This drawing is the property of ELLARD LTD, it may not be reproduced without the written authorization of Ellard Limited. All intellectual property rights are expressly reserved



Roundthorne Industrial Estate  
 Ellard House, Floats Road  
 Wythenshawe, Manchester  
 M23 9WB  
 Tel: 0161 945 4561, e-mail: technical@ellard.co.uk

**Title**  
 GENERAL ARRANGEMENT  
 FOR BP6 (JM150 & JM200)  
 (STOCK CODE 03274)

**Rev/Notes**

<b>Date</b>	10/03/2022		
<b>Drawn by</b>	DE	<b>Chk'd by</b>	AP
<b>Drg #</b>	BP6 - General Arr (4)		