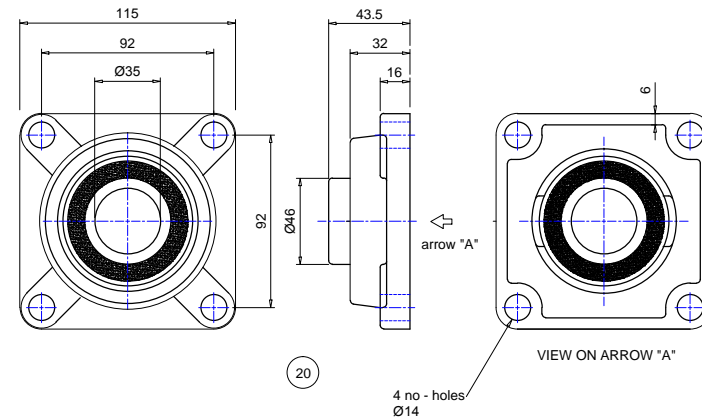
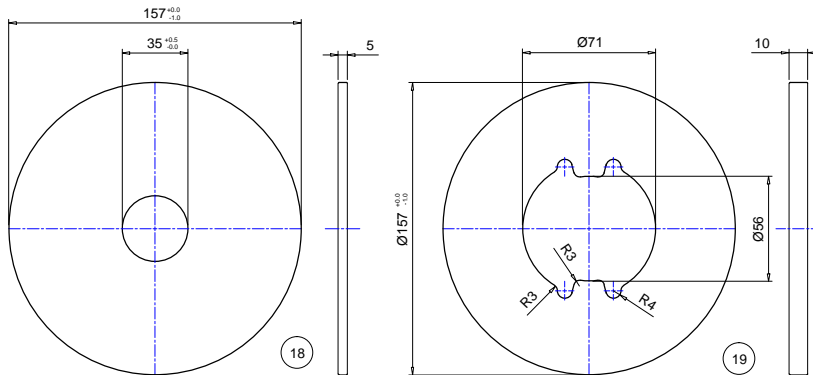
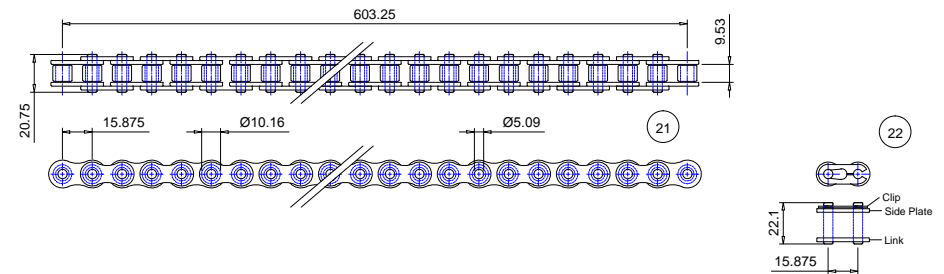
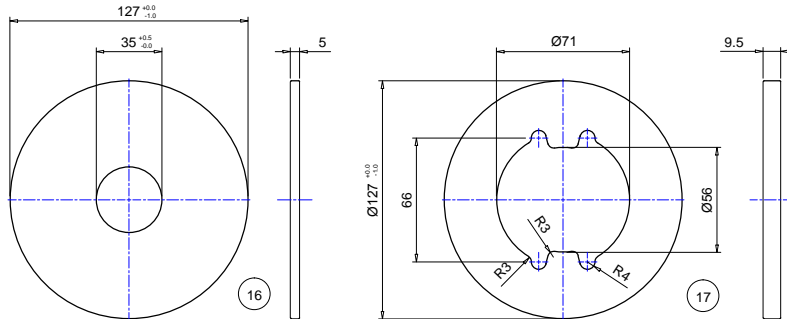


BILL of MATERIAL		
Item	Quantity	Description
14	1	Ø35 x 350 long EN24 steel bar
15	1	8 x 6 x 50 long steel key
16	2	Ø127 x 5 thick mild steel disc
17	1	Ø127 x 8 thick mild steel disc
18	2	Ø156 x 5 thick mild steel disc
19	1	Ø156 x 10 thick mild steel disc
20	1	Ø35 cast iron flange bearing
21	1	10A-1 roller chain 5/8 x 3/8 - 36 links (74 rollers)
22	1	Connecting link for 10A-1 roller chain



This drawing is the property of ELLARD LTD, it may not be reproduced without the written authorization of Ellard Limited. All intellectual property rights are expressly reserved



Roundthorne Industrial Estate
 Ellard House, Floats Road
 Wythenshawe, Manchester
 M23 9WB
 Tel: 0161 945 4561, e-mail: technical@ellard.co.uk

Title

GENERAL ARRANGEMENT
 FOR BP5 (JM500)
 50T PLATE WHEEL
 (STOCK CODE 03275)

Rev/Notes

Date

10/03/2022

Drawn by

DE

Chk'd by

AP

Drq #

BP5 - General Arr (5)