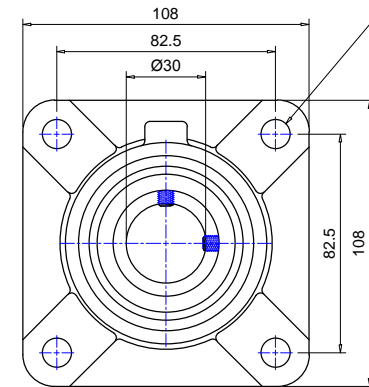
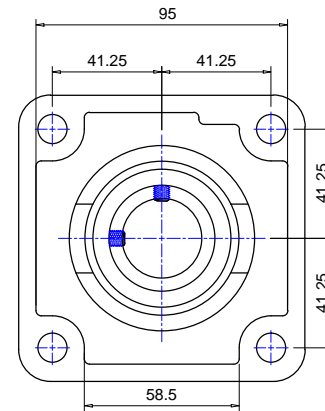
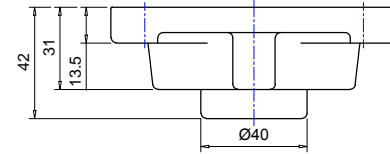
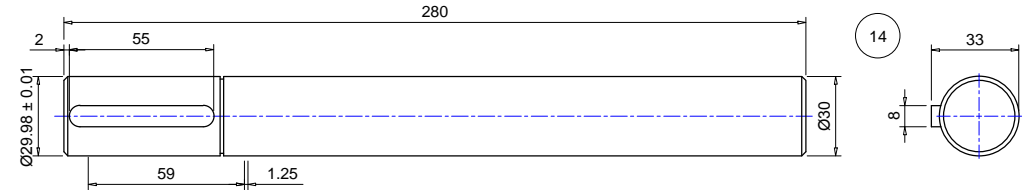
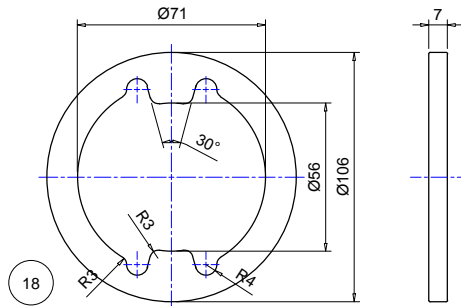
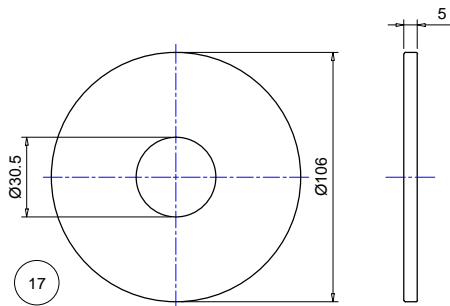
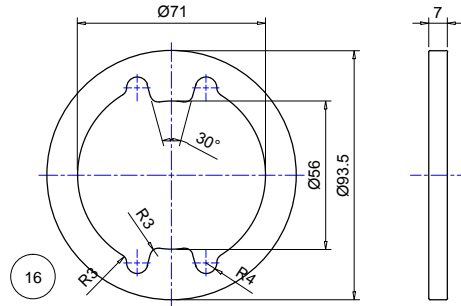
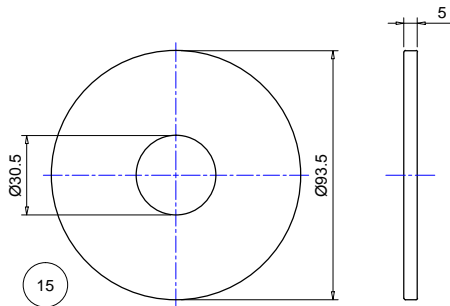


BILL of MATERIAL			
Item	Qty	Description	Stock code
14	1	Ø30 x 280 long EN24 steel shaft	
15	2	Ø93.5 x 5 thick mild steel discs	
16	1	Ø93.5 x 7 thick mild steel drive disc	
17	2	Ø106 x 5 thick mild steel discs	
18	1	Ø106 x 7 thick mild steel drive disc	
19	4	Ø30 cast iron flang bearing (UCF206)	
20	1	06B-1 x 46 links roller chain	
21	1	8 x 6 x 55 long steel key	



This drawing is the property of ELLARD LTD, it may not be reproduced without the written authorization of Ellard Limited. All intellectual property rights are expressly reserved



Roundthorne Industrial Estate
 Ellard House, Floats Road
 Wythenshawe, Manchester
 M23 9WB
 Tel: 0161 945 4561, e-mail: technical@ellard.co.uk

Title

GENERAL ARRANGEMENT
 FOR BP6 (JM150 & JM200)
 (STOCK CODE 03274)

Rev/Notes

Date

10/03/2022

Drawn by

DE

Chk'd by

AP

Drg #

BP6 - General Arr (5)