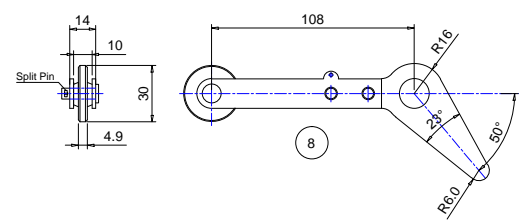
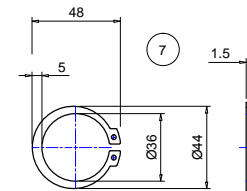
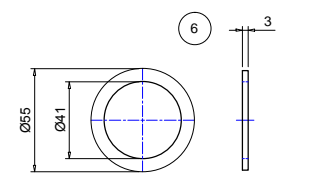
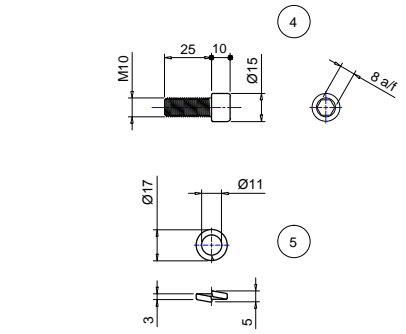
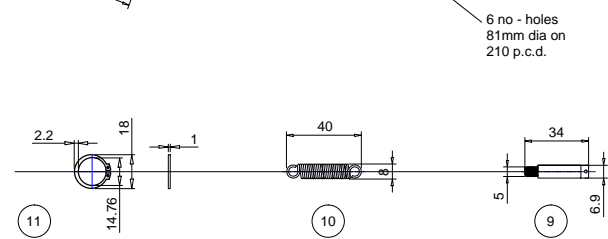
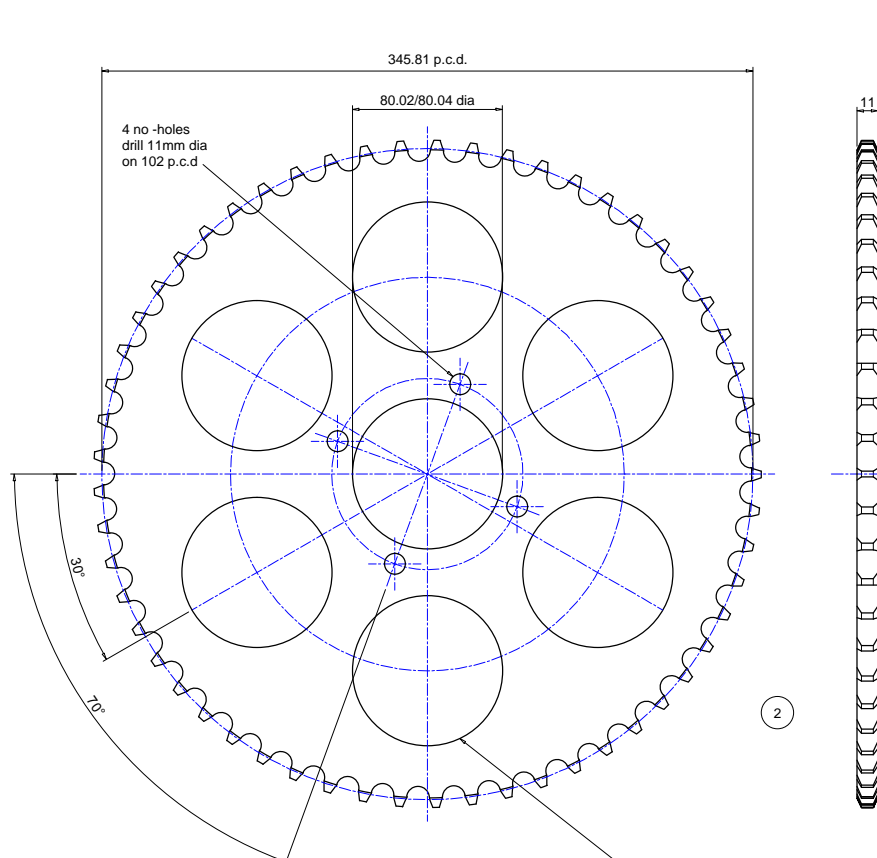
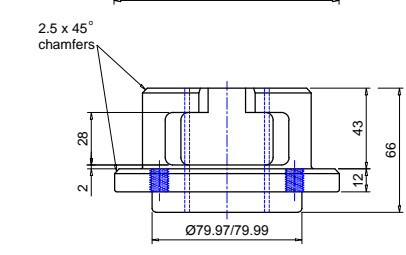
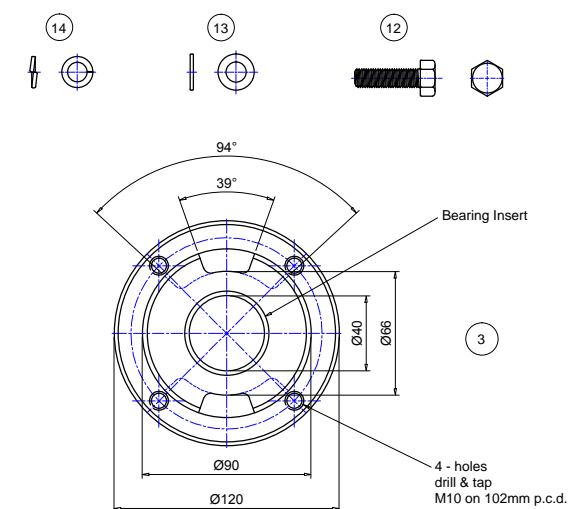


$$p.c.d = \text{pitch} \times \text{cosec} \left(\frac{180}{\text{no of teeth}} \right)^{\circ} = 345.81$$



Bill of Material			
Item	Quantity	Description	Stock code
2	1	57T x 11thk steel platewheel for 12A-1 roller chain	
3	1	120 dia x 66 deep cast iron drive boss	
4	4	M10 x 25mm steel cap head screw	
5	4	11mm i.d. steel spring washer	
6	1	53 o.d x 41 i.d x 3mm thk steel washer	
7	1	35mm i.d. steel circlip	
8	1	Chain Break Assembly	
9	1	Spring Post	
10	1	Spring	
11	1	Circlip	
12	3	M10 x 35mm Steel Bolt	
13	3	M10 Steel Spring Washer	
14	3	M10 Steel Flat Washer	



This drawing is the property of ELLARD LTD, it may not be reproduced without the written authorization of Ellard Limited. All intellectual property rights are expressly reserved

ELLARD
 Roundthorne Industrial Estate
 Ellard House, Floats Road
 Wythenshawe, Manchester
 M23 9WB
 Tel: 0161 945 4561, e-mail: technical@ellard.co.uk

Title
**GENERAL ARRANGEMENT
 FOR BP7 (JM1000)
 (STOCK CODE 03276)**

Rev/Notes

<u>Date</u>	10/03/2022		
<u>Drawn by</u>	DE	<u>Chk'd by</u>	AP
<u>Drq #</u>	BP7 - General Arr (4)		