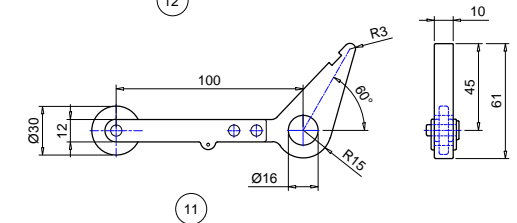
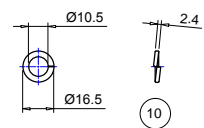
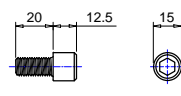
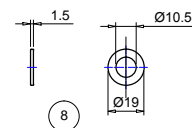
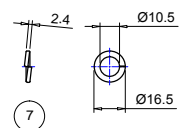
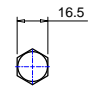
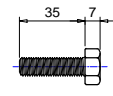
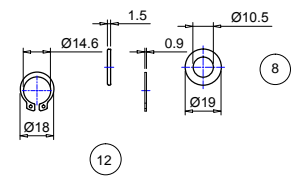
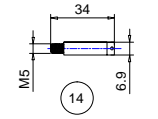
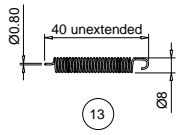
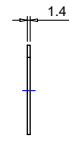
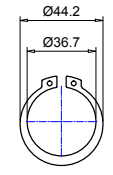
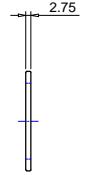
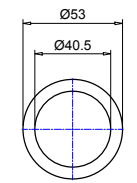
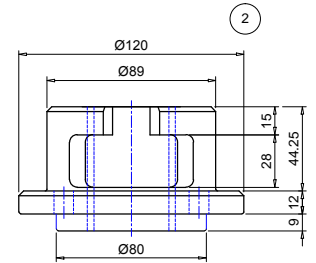
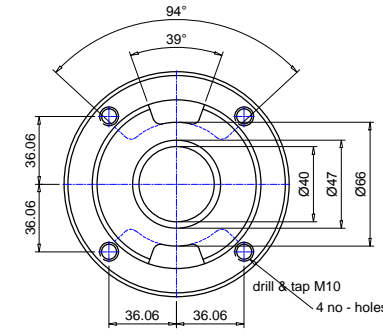
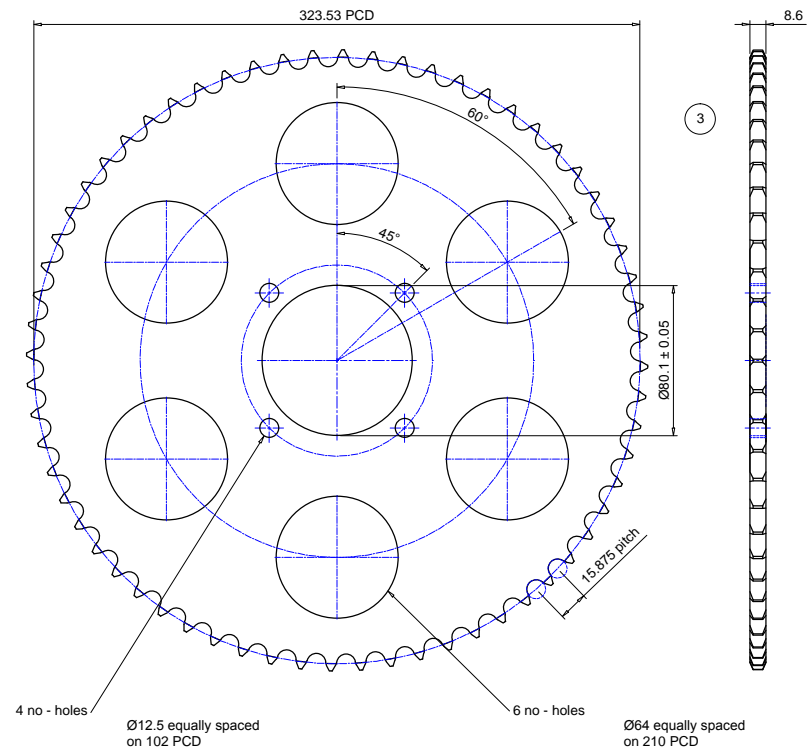


BILL of MATERIAL

Item	Quantity	Description
2	1	cast iron drive boss
3	1	64T x 5/8" pitch steel platewheel (10A-1 chain)
4	1	Ø40.5 x 2.75 thick steel flat washer
5	1	Ø36.7 steelcirclip
6	3	M10 x 35 long plate steel setscrew
7	3	Ø10 oiled steel spring washer
8	3	Ø10 plated flate steel washer
9	4	M10 x 20 long steel cap head screw
10	4	Ø10 oiled steel spring washer
11	1	chain break assembly
12	1	Ø14.6 spring steel circlip
13	1	Ø8 coil spring x 40 long unextended
14	1	Spring Post



This drawing is the property of ELLARD LTD, it may not be reproduced without the written authorization of Ellard Limited. All intellectual property rights are expressly reserved

ELLARD
 Roundthorne Industrial Estate
 Ellard House, Floats Road
 Wythenshawe, Manchester
 M23 9WB
 Tel: 0161 945 4561, e-mail: technical@ellard.co.uk

Title
 GENERAL ARRANGEMENT
 FOR BP9 (JM750)
 (STOCK CODE 03379)

Rev/Notes

Date	10/03/2022		
Drawn by	DE	Chk'd by	AP
Drg #	BP10B - General Arr (4)		