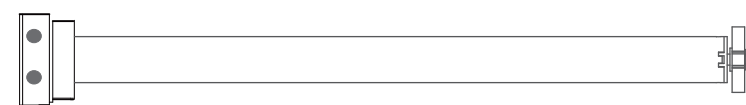


SAFETY NOTE

- 1, This appliance can be used by children aged from 8 years and above and persons with reduced physical, sensory or mental capabilities or lack of experience and knowledge if they have been given supervision or instruction concerning use of the appliance in a safe way and understand the hazards involved.
- 2, Children shall not play with the appliance.
- 3, Cleaning and user maintenance shall not be made by children without supervision.
- 4, If the supply cord is damaged, it must be replaced by the manufacturer, its service agent or similarly qualified persons in order to avoid a hazard.
- 5, **WARNING:** the drive shall be disconnected from its power source during cleaning, maintenance and when replacing parts.
- 6, The instructions shall state that the A-weighted emission sound pressure level of the drive is equal to or less than 70 dB(A), e.g. by writing $LpA \leq 70$ dB(A).
- 7, The mass and the dimension of the driven part shall be compatible with the rated torque and rated operating time.
- 8, The type of driven part the drive is intended for.
- 9, **WARNING:** Important safety instructions. It is important for the safety of persons to follow these instructions. Save these instructions.
- 10, Do not allow children to play with fixed controls. Keep remote controls away from children
- 11, Frequently examine the installation for imbalance and signs of wear or damage to cables and springs. Do not use if repair or adjustment is necessary
- 12, Watch the moving shutter and keep people away until he shutter is completely closed
- 13, **WARNING:** Important safety instructions. Follow all instructions, since incorrect installation can lead to severe injury.
- 14, Before installing the drive, remove any unnecessary cords and disable any equipment not needed for powered operation



Tubular Motor-DM25TE/L Specification



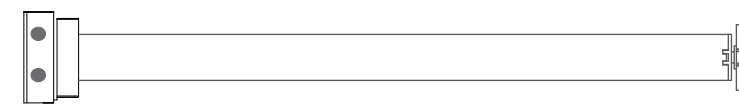
(A-07)

ELLARD
BLINDS AUTOMATION

SOLUX
AUTOMATION

Product introduction

⚠ One motor maximum can store 20 channels, over 20 channels, if still need add new channels, it will be repeating covered last channel.



Functional features:

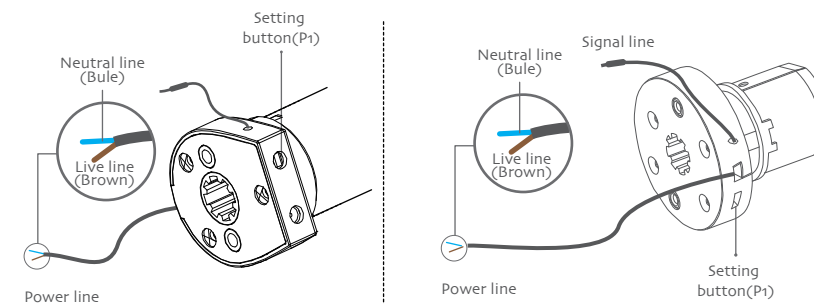
- Electronic Limit
- Stall Protection
- Jog & Tilt
- Program Button
- Speed Regulation
- Memorized Setting
- Switch Direction
- Built-in Receiver
- Preferred Stop Position
- Reset to Factor Mode
- AC 100~240V



Parameter (More models and parameters are subject to the nameplate)

Type	Rated Torque (N.m)	Rated Speed (r/min)	Rated Current (A)	Rated Power (W)	Rated Voltage (V)	Emission Frequency(MHz)
DM25TE/L	0.7	34	MAX 0.3	10	AC 100-240	433-92
	1.1	40	MAX 0.3	13	AC 100-240	433-92
	1.5	32	MAX 0.3	13	AC 100-240	433-92

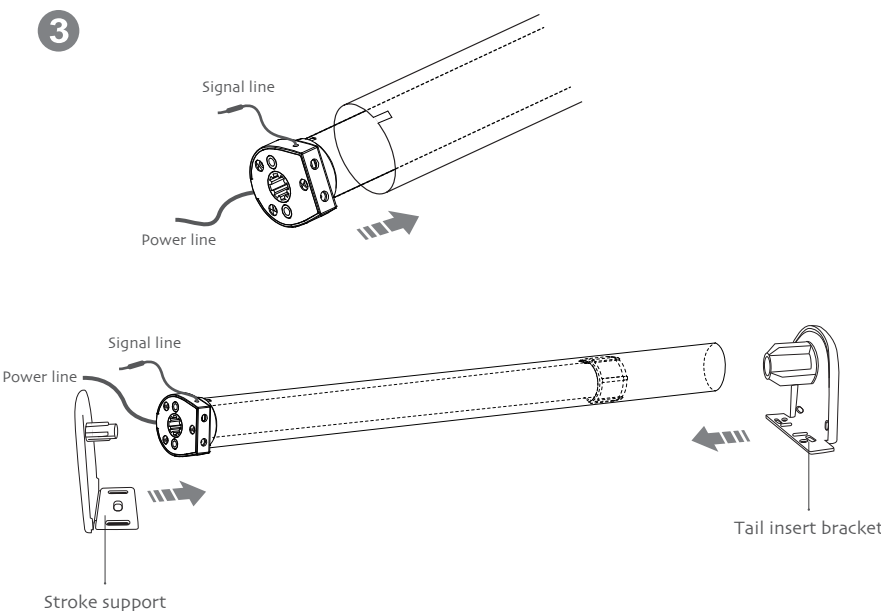
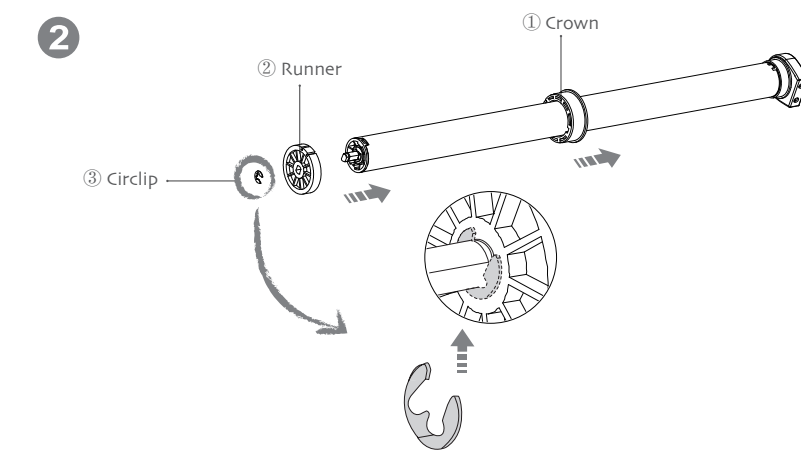
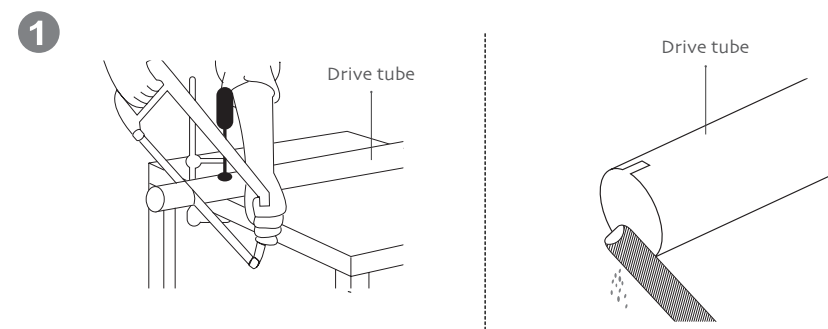
Motor matching limit head



Note: the motor can match the two limit heads, figure 1 is 303# limit head, figure 2 is 306#. The motor installation diagram and motor operation are all on the 303#.

Motor installation

- ① Driving tube must be close-fitting with crown and drive adapter.
- ② Choose crown and drive adapter based on the driving tube.



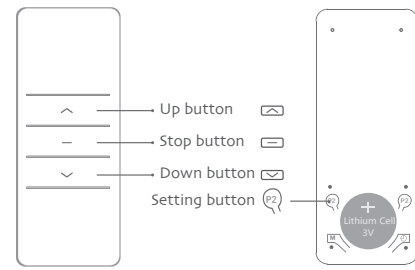
Operation note

⚠ Please read the following precautions before use:

1. Operating:
 - ① The valid interval of the emitter button is 10s, the emitter will quit the set after 10s.
 - ② The motor will run or beep for hint, please do the next step after the hint.
2. Set limit position:
 - ① The up/down limit position can't at the same position.
 - ② After limit setting, with power off and memory function.
 - ③ Into the match-code status 2 minutes later, it will quit out the setting limits status automatically.
 - ④ It will delete every memory and restore the factory settings.
3. When the motor running without any operation, the maximum running time is 6 minutes, it will stop automatically.
4. If the emitter lost, new emitter can through the code way to add emitter quickly and retain the limit.



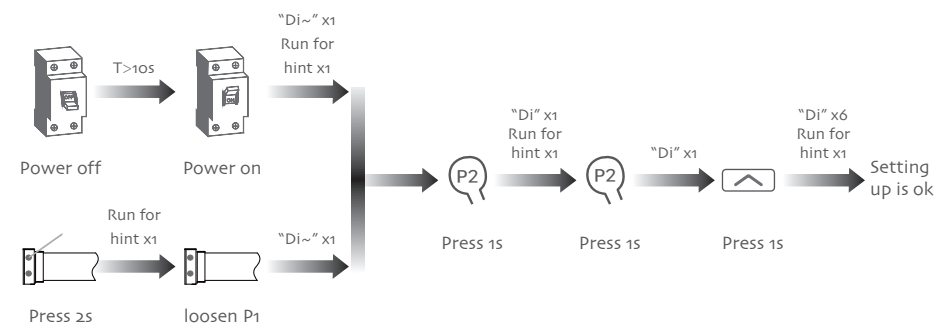
Button specification



1 Setting up

P2→P2→Up

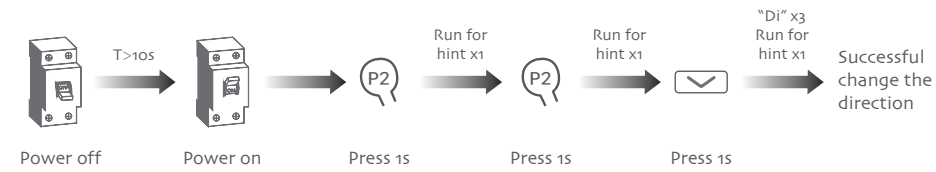
If you need to reverse the rotation of the motor controlled by the emitter, please run the reverse of direction setting (see the motor P1 button operation).



Note: after the success of the code, remove the original travel setting and the speed of the motor operation mode, restore the factory value.

2 Switch direction

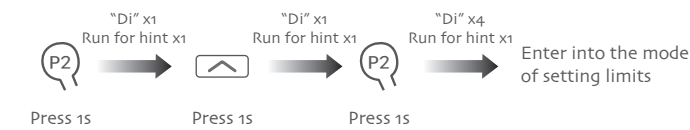
P2→P2→Down



Note: After the success of reversing to retain all the settings of the original motor.

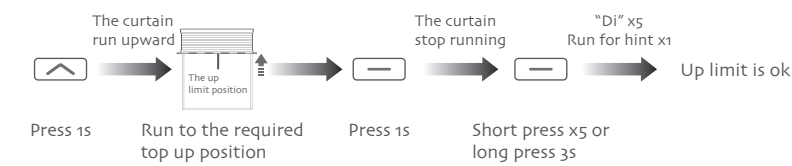
3 Limit position setting

1, Enter the limit position setting mode P2→Up→P2

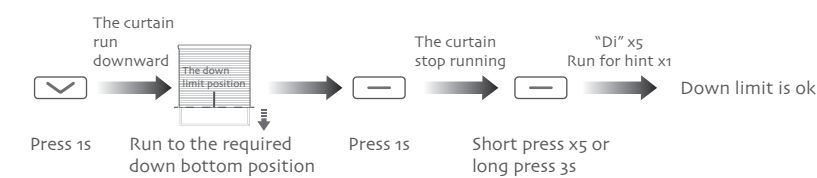


Note: This operation must be carried out without the limit; In the process of motor running upward or downward, press the emitter setting button, the motor enters the jog-move operation state, can precisely set the limit position.

2, Set the up limit position Up→Stop→Stop



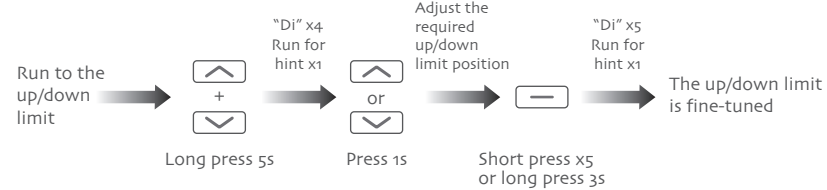
3, Set the down limit position Down→Stop→Stop



Note: After the motor is powered off again, it will exit the trip setting mode; if you have not completed the limit, you will exit the setting mode of the limit, if you already have a limit, you will continue to use the pre-set limit; if the motor already has a limit, you need to delete the limit before you can set the limit.

4 Fine-tuning the up/down limit position setting

Up+Down→Up/Down→Stop

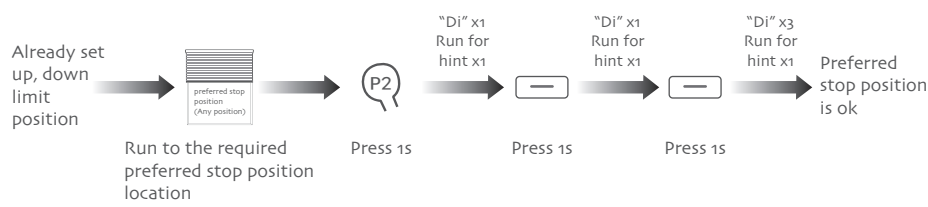


Note: The original preferred stop position will be deleted automatically after the up/down limit position is adjusted successfully. If fine-tuning is not successful, the original up/down limit position is still used.

5 Preferred stop position

P2→Stop→Stop

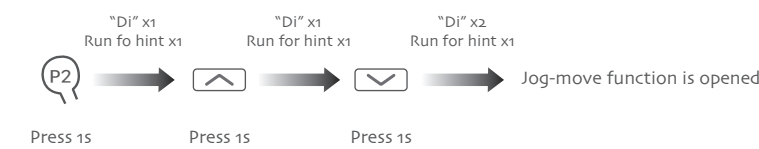
After the up limit and down limit setting, you can set preferred stop position between them as the half open position.



Note: Continuous moving mode, long press stop button, the curtain run directly from the current position to preferred stop position (Apply to the shade); Jog-move mode, long press stop button, the motor will first run to the down limit position, then run to preferred stop position (Apply to venetian blinds); Repeat this operation to remove preferred stop position.

6 Jog-move setting

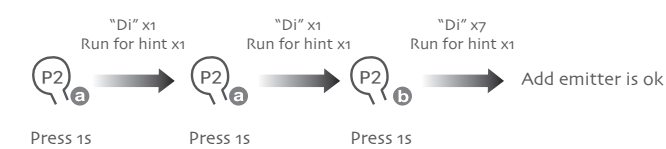
P2→Up→Down



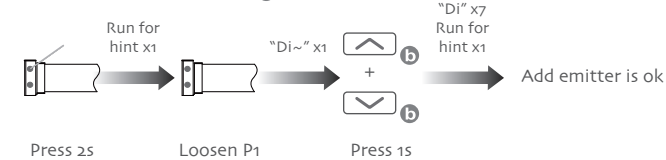
Note: Repeat this operation to cancel dot-move function; In the jog-move mode, short press up/down button 2s to loosen, the motor is jog-move to run; if long press more than 2s, the motor run continuously.

7 Add emitter

Method one P2 a → P2 b → P2 b



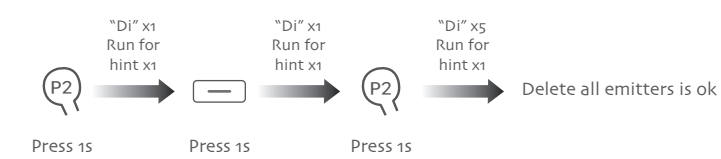
Method two (Up+Down) b



Note: Emitter a is the one already matched code, while emitter b has not; Repeat method one to remove the added emitter b; After the success of the code to retain the original motor all the settings.

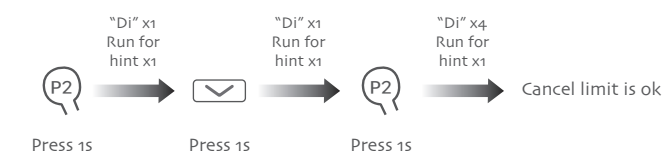
8 Delete all emitters

P2→Stop→P2



9 Cancel limit

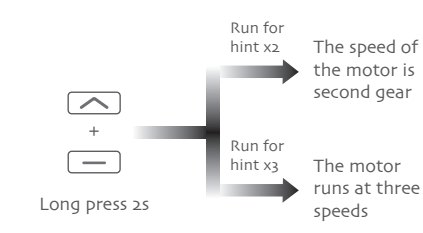
P2→Down→P2



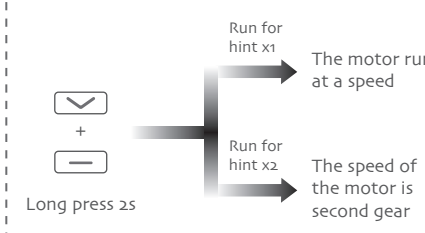
Note: This operation together with the preferred stop position to delete.

10 Speed Regulation

1, Improve the speed of the motor Up+Stop



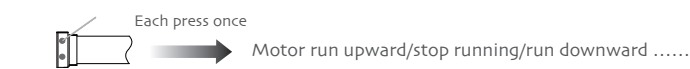
2, Reduce the motor running speed Down+Stop



Note: If motor without run for hint, indicating that the motor has reached the maximum or minimum value.

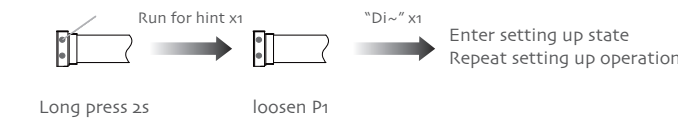
Motor P1 button operation

1, Short press operation

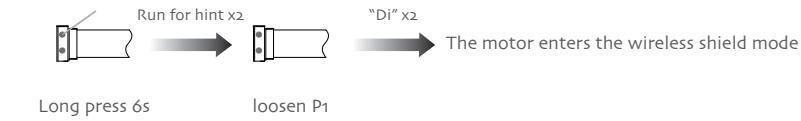


Short press P1

2, Setting up or add emitter

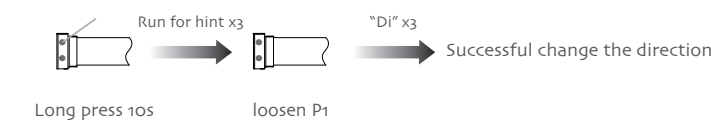


3, Shielding wireless function



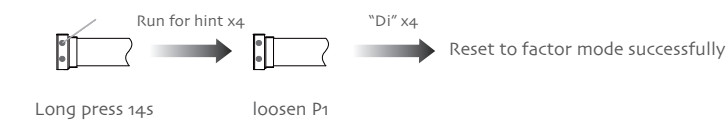
Note: the motor enters the wireless shield mode, saves the previous system function setting and the emitter code, and closes the wireless reception function (short press P1 to restore wireless reception).

4, Switch direction



Note: After the success of the reversing, motor limit remains the same.

5, Reset to factor mode



Fault and solution

NUMBER	PHENOMENON	REASON	PROCESSING METHOD
1	Motor can't running	a, The emitter is not matched. b, If press P1 button for a long time while with no reaction, may be the power is short-circuit or the circuit board or the motor is broken.	a, Set up the match code b, Contact the engineers for after-sales

Tubular Motor-DM25TE/L Specification



(A-07)