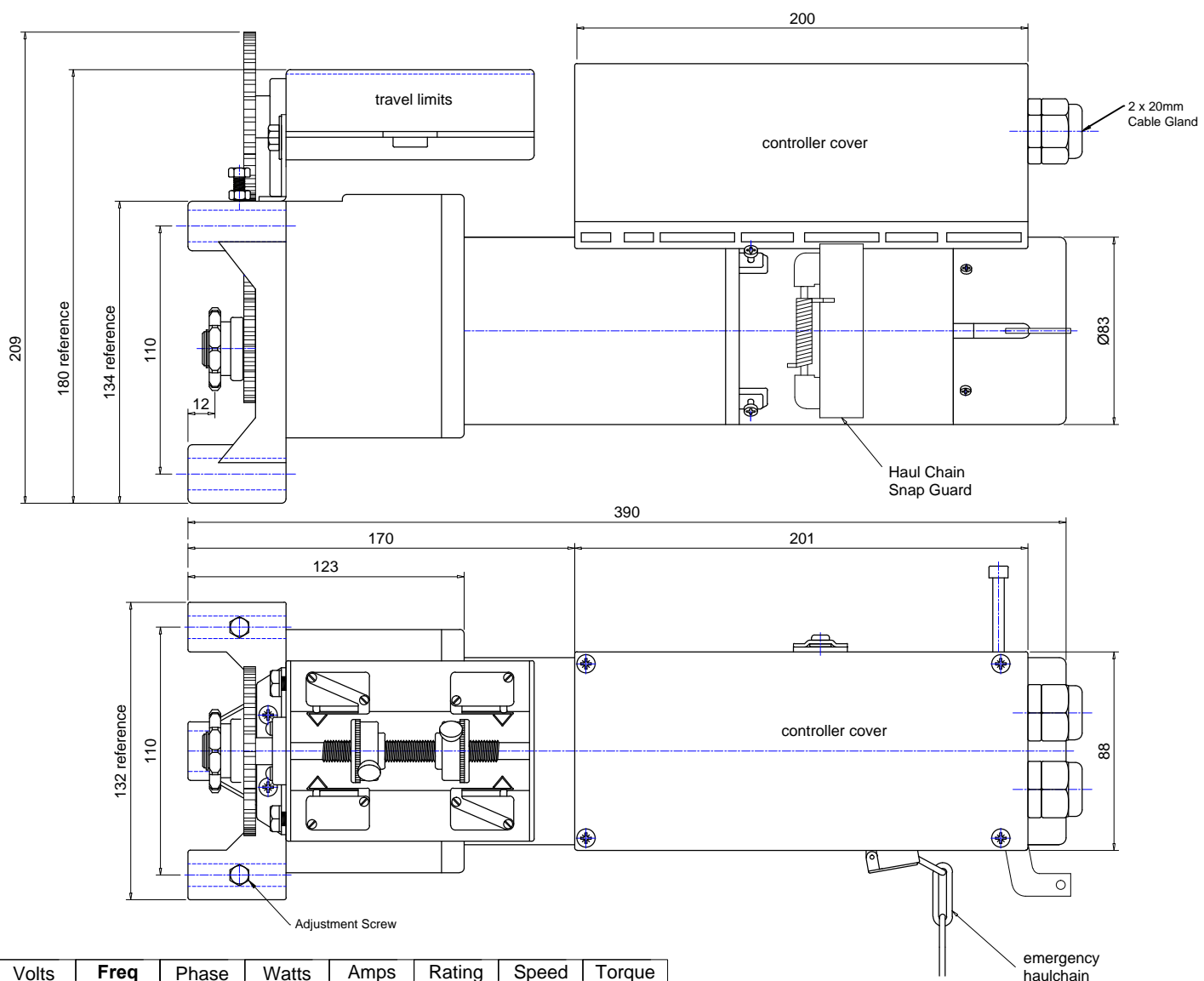


**JM150 Limit Box Detail**



| Volts (V) | Freq (Hz) | Phase (ph) | Watts (W) | Amps (A) | Rating (min's) | Speed (RPM) | Torque (Nm) |
|-----------|-----------|------------|-----------|----------|----------------|-------------|-------------|
| 230       | 50        | 1          | 90        | 1.8      | 10             | 34          | 20          |

This drawing is the property of ELLARD LTD, it may not be reproduced without the written authorization of Ellard Limited. All intellectual property rights are expressly reserved

**ELLARD**  
 Roundthorne Industrial Estate  
 Ellard House, Floats Road  
 Wythenshawe, Manchester  
 M23 9WB  
 Tel: 0161 945 4561, e-mail: technical@ellard.co.uk

Title  
**JM150 (MONITORED PCB)  
 GENERAL ARRANGEMENT (1)  
 (L.H SHOWN)**

Rev/Notes

|                 |   |                 |    |
|-----------------|---|-----------------|----|
| <u>Date</u>     | 01/07/2021                              |                 |    |
| <u>Drawn by</u> | DE                                      | <u>Chk'd by</u> | AP |
| <u>Drg #</u>    | JM150 (Monitored PCB) - General Arr (1) |                 |    |