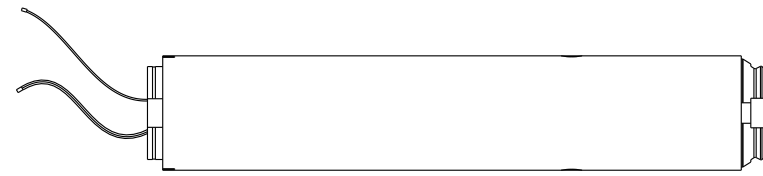


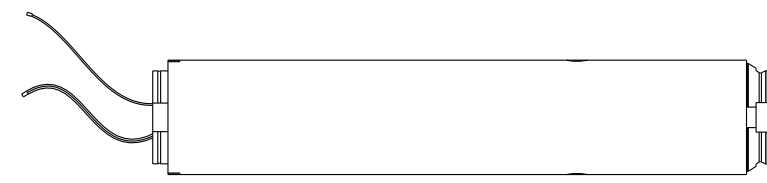
# Tubular Motor- DV24AE Series Specification(A-00)



Apply to DV24AE/L , DVQ24AE/L , DV24AEQ/L , DVQ24AEQ/L

## Product introduction

One motor maximum can store 20 channels, over 20 channels, if still need add new channels, it will be repeating covered last channel



### Functional features:

- Electronic Limit
- Single Shaft/Dual Shaft
- Jog & Tilt
- Stall Protection
- Low Power Consumption
- Reset to Factor Mode
- Built-in Receiver
- Memorized Settings
- Preferred Stop Position
- Unpair Single Emitter
- Speed Regulation
- Quick Limit Adjustment



Parameter (More models and parameters are subject to the nameplate)

Type	DV24AE/L-0.6N/34r	DV24AEQ/L-0.6N/34r	DVQ24AE/L-0.6N/34r	DVQ24AEQ/L-0.6N/34r
Rated Torque(N.m)	0.6N.m	0.6N.m	0.6N.m	0.6N.m
Rated Speed(RPM)	34RPM	34RPM	34RPM	34RPM
Rated Voltage(V)	12V	12V	12V	12V
Emission Frequency(MHz)	433.92MHz	433.92MHz	433.92MHz	433.92MHz

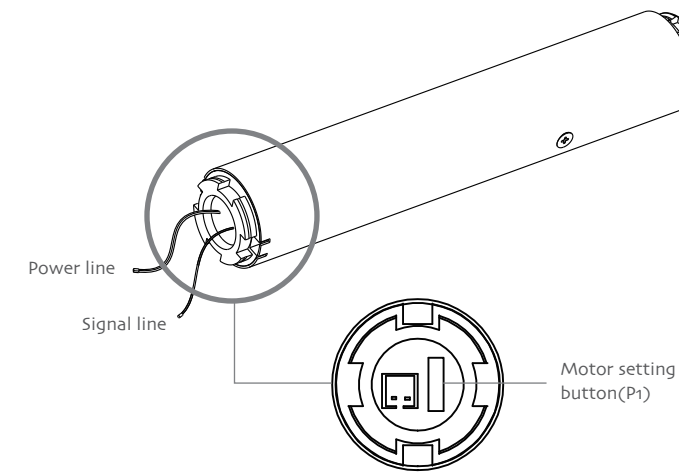
## Product characteristics comparison

Type	Motor schematic diagram	Start at full speed/ Slow and slow stop	The length of the motor
DV24AE/L		Start at full speed	131mm
DV24AEQ/L		Slow and slow stop	
DVQ24AE/L		Start at full speed	143mm
DVQ24AEQ/L		Slow and slow stop	

Note: Start at full speed refers to the run at a constant speed motor are in any case; Slow and slow stop refers to the motor in any circumstances to slow start, then fast running, finally run slowly until stopped.

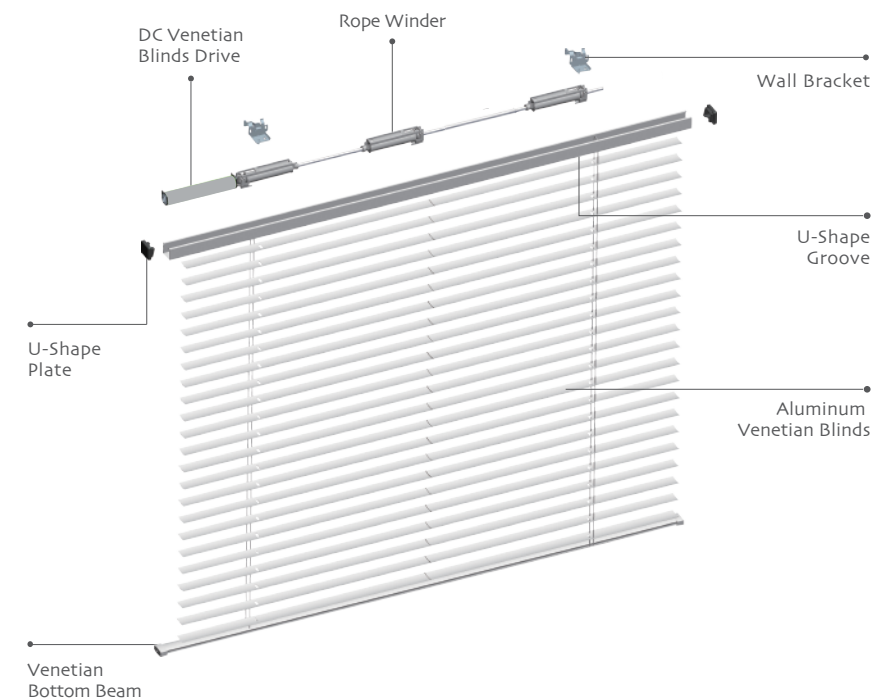
## Motor installation

1

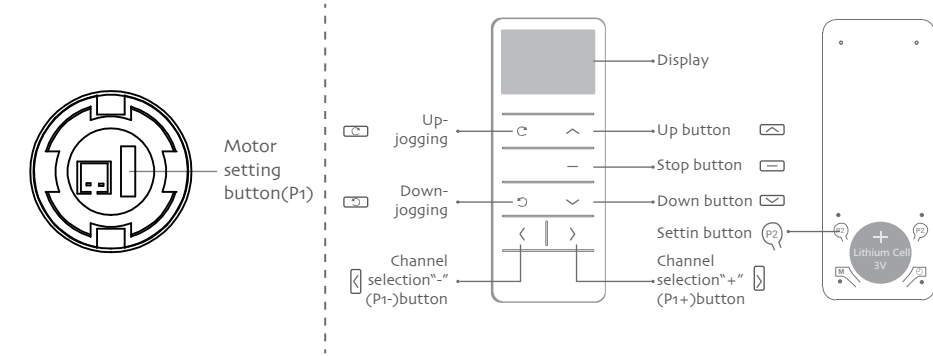


Note: DV24AE/L , DV24AEQ/L , DVQ24AE/L , DVQ24AEQ/L schematic diagram.

2



## Button specification



## Operation note

Please read the following precautions before use:

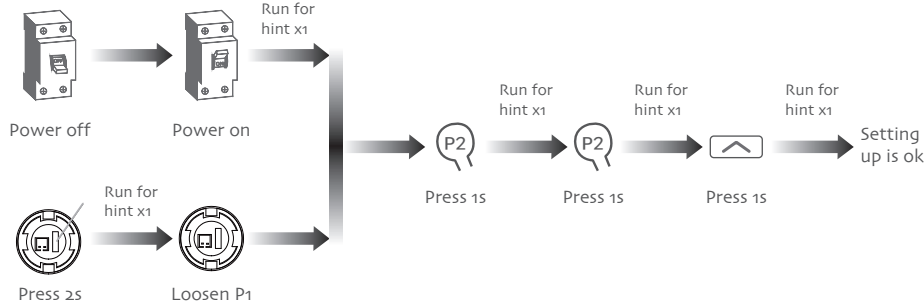
- Not operating under low voltage motors:  
Motor stop running when the supply voltage is lower than 8.0V, and it will restart again when the voltage is greater than 8.5V.
- Operating:  
① The valid interval of the emitter button is 10s, the emitter will quit the set after 10s;  
② The motor will run for a hint, please do the next step after the hint.
- Set limit position:  
① After the up/down limit position setting, and the up/down limit position and the third limit position can't be at the same position;  
② After limit setting, with power off and memory function;  
③ Into the match-code status 2 minutes later, it will quit out the setting limits status automatically;  
④ It will delete every memory and restore the factory settings.
- When the motor is running without any operation, the maximum running time is 6 minutes, it will stop automatically.
- If the emitter is lost, please set it up again with a new emitter.



### 1 Setting up

P2→P2→Up

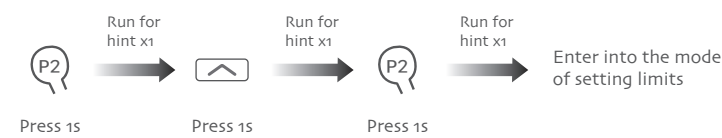
If you need to reverse the rotation of the motor controlled by the emitter, please run the reverse of direction setting (as lists in the second point of the P1 button setting)



Note: After the success of the code will delete the original limit settings and motor running mode speed settings, restore the factory value.

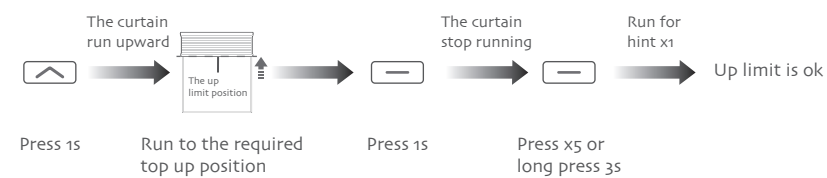
### 2 Limit position setting

1, Enter the limit position setting mode P2→Up→P2

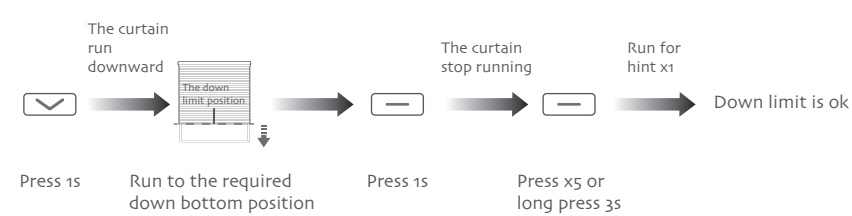


Note: In the process of motor running upward or downward, press the emitter setting button, the motor enters the stepping operation state, can precisely set the limit position.

2, Set the up limit position Up→Stop→Stop



3, Set the down limit position Down→Stop→Stop

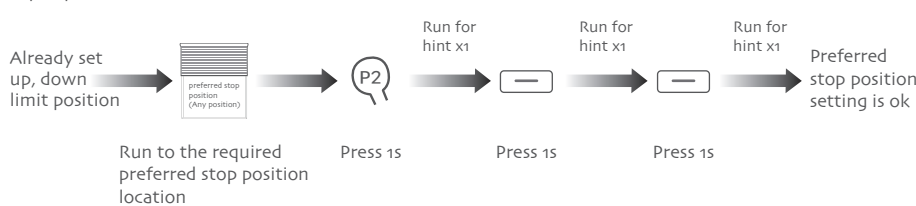


Note: After the motor power to again, will exit the limit position setting mode; Unfinished limit position setting withdraw from limit position setting mode, if already have schedule before setting, can not set the limit, only fine-tuning the limit position.

### 3 Preferred stop position

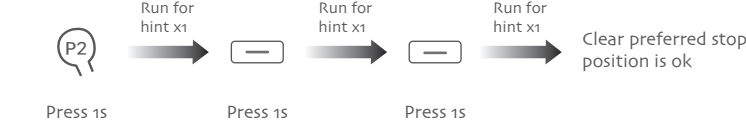
1, Set preferred stop position P2→Stop→Stop

After the up limit and down limit setting, you can set preferred stop position between them as the half open position.



Note: Continuous moving mode, long press stop button, the curtain run directly from the current position to preferred stop position (Apply to the shade); Jog-move mode, long press stop button, the motor will first run to the down limit position, then run to preferred stop position (Apply to venetian blinds).

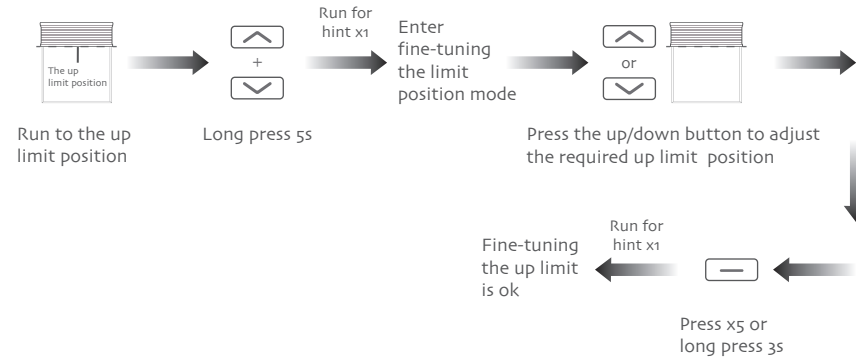
2, Clear preferred stop position P2→Stop→Stop



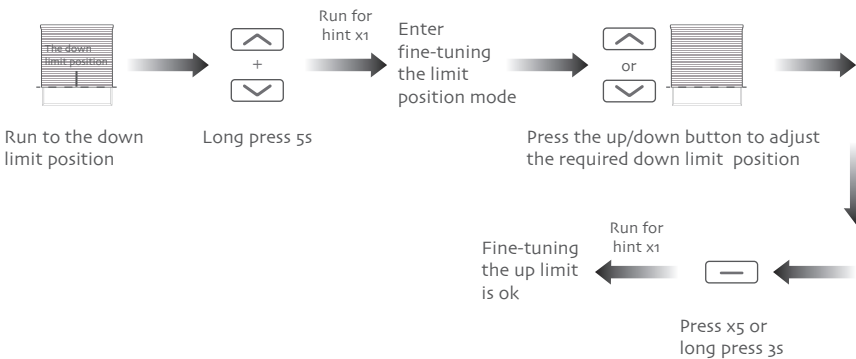
### 4 Fine-tuning the up/down limit position setting

Up+Down→Up/Down→Stop

1, Fine-tuning the up limit position



2, Fine-tuning the down limit position



Note: After entering fine-tuning mode, short press up/down button, motor jog-move, long press for 2s the motor run continuously, loosen the button motor stop running; After fine-tuning the up/down limit position, the original preferred stop position will be automatically replaced; If fine-tuning is not successful, use the original limit position.

### 5 Jog-move/continuous moving setting

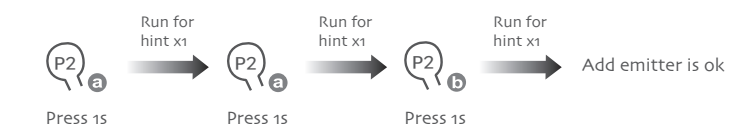
P2→Up→Down



Note: In the jog-move mode, short press up/down burron 2s to loosen, the motor is jog-move to run; If long press more than 2s, the motor run continuously; In the case of jog-move off, press up-jogging or down-jogging can also make the motor jog run.

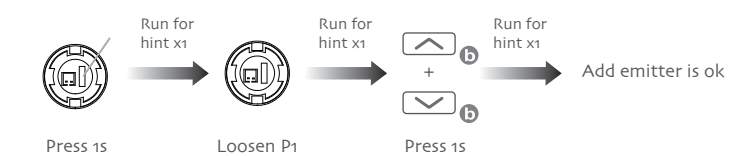
### 6 Add emitter

Method one P2 a→P2 a→P2 b



Note: Emitter a is the one already matched code, while emitter b has not; Repeat this operation can be delete emitter b.

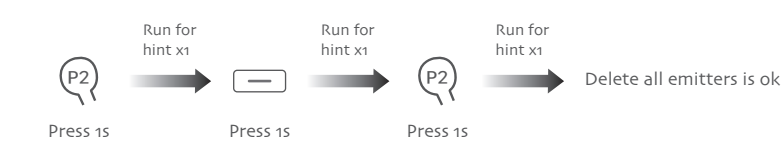
Method two (Up+Down) b



Note: After the success of add emitter to retain all the settings of the original motor.

### 7 Delete all emitters

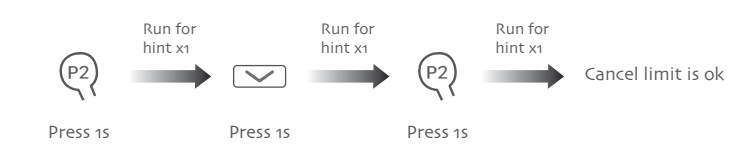
P2→Stop→P2



Note: After the success of delete emitter to retain all the settings of the original motor.

### 8 Cancel limit

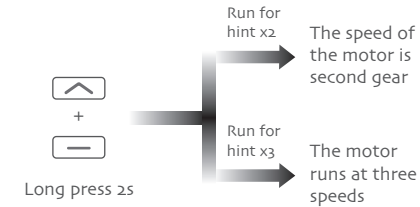
P2→Down→P2



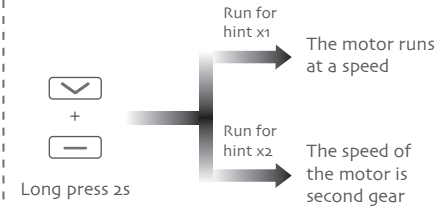
Note: This operation together with the preferred stop position to delete.

### 9 Speed Regulation

1, Improve the speed of the motor Up+Stop



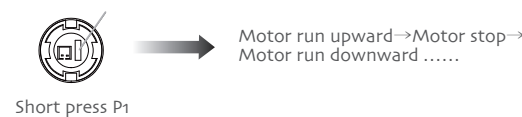
2, Reduce the motor running speed Down+Stop



Note: If motor without run for hint, indicating that the motor has reached the maximum or minimum value; The motor speed in continuous moving mode has 3 levels, 28r/min, 34r/min, 40r/min, the factory default is 34r/min.

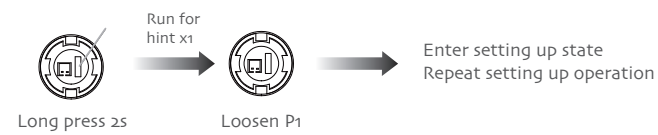
### Motor P1 button operation

1, Cycle operation



Note: This operation must be carried out in the limit state.

2, Setting up or add emitter



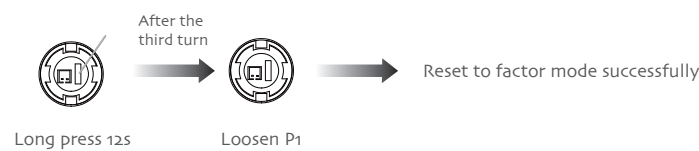
Note: This operation must be carried out in the limit state.

3, Switch direction



Note: After the success of the reversing, retain all motor original settings.

4, Reset to factor mode



Note: After the Reset to factor mode, will delete all previous system function setting and the emitter code.

### Fault and solution

NUMBER	PHENOMENON	REASON	PROCESSING METHOD
1	The motor is not running	a, The emitter is not matched. b, If press setting button for a long time while with no reaction. May be the power is short-circuit or the circuit board or the motor is broken.	a, Setting up again b, Contact after-sales service